

TOUGH Endures even the most extreme processes

EASY Snap shut catches and fully-sealed systems for quenching

QUICK Reset, download and analyze on the go with the Datapaq® Insight for Mobile app



**HIGH TEMPERATURE
product profiling and
FURNACE SURVEYING
SOLUTIONS** from the
brand you trust.

Datapaq® FURNACE TRACKER System

The market leader for 35+ years

For metal heat treatment industries, measuring both product temperature and its environment is critical to ensure both product quality and process efficiency.

From data loggers and thermal barriers to intuitive software data analysis and reporting, Fluke Process Instruments designs and manufactures the most robust, sophisticated Furnace profiling Systems. We have everything you need to profile your process, no matter how challenging.

Support product quality and furnace compliance with the toughest and quickest profiling solution.



Datapaq® TP6 DATA LOGGER

Manufactured from 316L stainless steel, the Datapaq TP6 is available with 10 or 20 thermocouple channels. The data logger is also fully waterproof (IP67 rated) and equipped with Bluetooth communication to make system setup quick and easy from either a PC or mobile device. Additional features include:

- Flexibility to mix thermocouple types on one logger—beneficial for temperature uniformity surveys (TUS) and system accuracy tests (SAT)
- Radio frequency (RF) telemetry for data acquisition in real time—providing instant decision making and production gains
- Logger accuracy $\pm 0.3\text{ }^{\circ}\text{C}$ ($\pm 0.5\text{ }^{\circ}\text{F}$)—complies with the most stringent aerospace and automotive requirements
- User-replaceable Lithium, Alkaline and NiMH battery options
- Memory-stored logger calibration correction factors for quick and error-free applications—allowing for faster TUS reporting



The widest range of **THERMAL PROTECTION SOLUTIONS** you won't find anywhere else

Thermal barriers

Selecting the ideal thermal barrier for your high-temperature heat treatment process is one of the critical steps in improving your profiling capabilities. Fluke Process Instruments has an extensive range of thermal barriers, which have been designed to provide maximum thermal protection.

If a solution cannot be found from our existing range, we offer bespoke design services to provide you with a system specifically for your process.



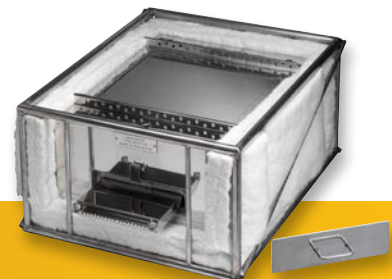
Vacuum and controlled atmosphere processes

- Designed using microporous ceramic insulation and sealed heatsinks containing a phase change material (PCM) to keep the logger temperature stable
- Rugged design featuring floating plate technology for maximum service life
- Use up to 1200 °C (2192 °F) and in gas quenches to 20 Bar (when fitted with optional quench deflectors)
- Ideal for AMS2750 and CQi-9 TUS surveys
- Currently used in thousands of furnaces worldwide

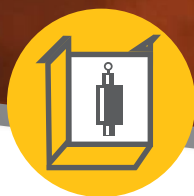


Steel slab and billet reheat

- Dual stage evaporative solution—utilizes a two-stage insulation system to maximize thermal duration
- Designed for use in processes up to 1250 °C (2282 °F)



Can't find what you're looking for? Our team of engineers will design a bespoke solution for applications with unique thermal or handling requirements.



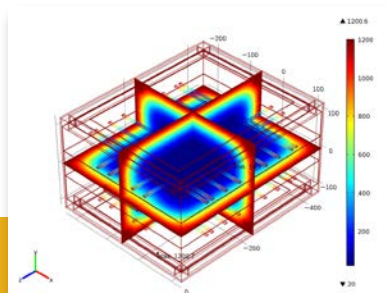
Solution treatment and aging

- Innovative sealed insulation design for maximum performance in the smallest volume
- No user replaceable insulation—eliminating the need for disposable ceramic blankets and fibers
- Refills during quench in order to be ready for aging processes
- Easy-to-use faceplate design allows thermocouples to be changed, reused, or swapped as needed
- Suitable for quench applications with temperatures up to 900 °C (1652 °F)

Special and custom solutions

The experienced engineering team at Fluke Process Instruments has produced numerous thermal barriers for applications including:

- Controlled atmosphere brazing.
- Aluminum vacuum brazing
- Rolling aluminum log solution treatment
- Long duration aluminum slab heat treatment
- Glass tempering
- Salt quench
- And numerous other processes that can last from minutes to days



Your complete **THERMAL PROFILING** solution

The Datapaq Furnace Tracker System is designed for reliable and accurate in-process temperature surveys as well as to meet specific process requirements in the most intense manufacturing environments. A complete system features everything you need including:

- Customizable thermal barriers
- Data loggers in a number of sizes to fit your process
- Thermocouples including PTFE, glass fiber and mineral insulated varieties
- Intuitive software solutions



Datapaq Insight™ Software

Transform Raw Data into Information

The Insight Furnace Tracker Software is used to analyze, report, and archive results obtained from the Furnace Tracker System. Each of the three software options is designed to provide a clear user interface, context sensitive help screens, and wizards to assist infrequent users.

The software also enables you to share information across the factory, and across the world, with the ability to change languages and email results at the touch of a button.

Users can even use our mobile app to analyze results and communicate with dataloggers via Bluetooth, removing the need for a PC on the factory floor.



Datapaq Insight™ Furnace Tracker Basic

A cost-effective solution for general profile inspections. The basic software supports RF and hardwired telemetry options and enables in-depth results analysis. Additionally, up to three sets of results can be overlaid onto one graph to identify key changes in process conditions.



Datapaq Insight™ Furnace Tracker

This fully featured software builds on the Insight Furnace Tracker Basic by incorporating additional features such as the ability to improve the accuracy of results by adding logger and thermocouple calibration factors. It also adds statistical process control features and the ability to automatically see differences between thermocouples—a time saver when checking for hot and cold spots.



Datapaq Insight™ Furnace Survey

This advanced software provides full temperature profiling and TUS functionalities. The TUS software performs analysis functions in real-time and can be set to alert you when critical events occur during a furnace survey. Additionally, the visual indication of the hottest and coldest points enables users to see exactly what is happening in their furnace. The comprehensive report also includes thermocouple and logger calibration corrections and is compliant with the latest AMS2750 specifications.

Datapaq Mobile Applications

Analyze data wherever you are with your smartphone or tablet

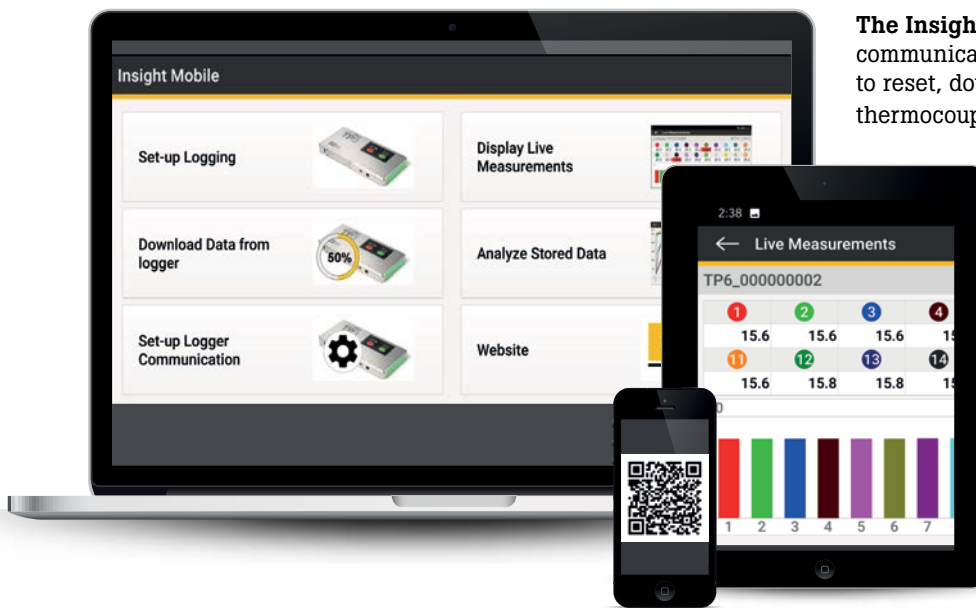
Datapaq Insight™ for mobile—reset, download and analyze on a mobile platform

Eliminate the need for a PC on the factory floor. Our Insight for Mobile software allows you to reset, download, and check thermocouple operation directly via Bluetooth connection. Results can be checked instantly via smartphone or tablet, allowing you to save time on every profile run.



Paqfile Viewer for mobile

View and analyze data from anywhere in the world. Our Paqfile Viewer features an interactive graph and the ability to read temperature measurements from every sample point. Temperature thresholds can be displayed and edited, allowing the user to check time at temperature and max/min temperatures for each thermocouple.



The Insight for mobile app; communicate directly with the data logger to reset, download or simply check that the thermocouple connections are good.

Fluke Process Instruments

Americas

Everett, WA USA
Tel: +1 425 446 6780
sales@flukeprocessinstruments.com

EMEA

Cambridge, UK
Tel: +44 1223 652 400
sales@flukeprocessinstruments.co.uk

China

Beijing, China
Tel: +86 10 6438 4691
sales@flukeprocessinstruments.com.cn

Asia East and South

India Tel: +91 22 2920 7691
Singapore Tel: +65 6799 5596
sales.asia@flukeprocessinstruments.com

Worldwide Service

Fluke Process Instruments offers services, including repair and calibration. For more information, contact your local office.

www.flukeprocessinstruments.com

©2021 Fluke Process Instruments.
Specifications subject to change without notice.
9/2021 6019492a-en

Modification of this document is not permitted without written permission from Fluke Corporation.